

# OctoPlex<sup>®</sup>

Power Distribution System



## G2-Series

**NMEA 2000<sup>®</sup> Certified  
Power Distribution System**

# G2-Series

## Intelligence for Greater Performance

The Maretron OctoPlex® system puts the user in complete control of all AC and DC loads within the vessel. By using a NMEA2000® CAN bus network, a redundant architecture ensures system reliability and safety, removing single point failures. OctoPlex offers significant weight reduction in wiring and reduced installation complexity, while also allowing for the monitoring and control of common NMEA2000 marine devices, such as compass, GPS, tank level adapters and more. The NMEA2000 network allows remote control of field-replaceable AC and DC circuit breakers, enabling the placement of panels in remote locations and removing the need for traditional large electrical panels.

Through the use of a Multi-Function Display, OctoPlex delivers a fully configurable and/or customizable user interface. Acting as the main human interface of the system, the Multi-Function Display brings the system functions, status reports and alarms directly to the user.

The OctoPlex® suite of products also includes the Network Power Supply that provides power to and diagnostics for the system's redundant CAN bus, a Battery Monitor to report vital battery status and a System Monitor, which offers a generic switch status report for discrete signals such as bilge pumps, alarms, and more.

1



### Battery Monitor

Measures and reports 12 and/or 24 VDC, single high-side current and up to four battery temperatures. Configurable alarm thresholds for voltage, current and temperature can be displayed via the MFD.

2



### AC Power Distribution Unit 8, 13 and 19 Position

Provides AC circuit protection, remote ON/OFF actuation and status monitoring (single, double or three-pole breakers).

6



### DC Power Distribution Unit 8 and 16 Position

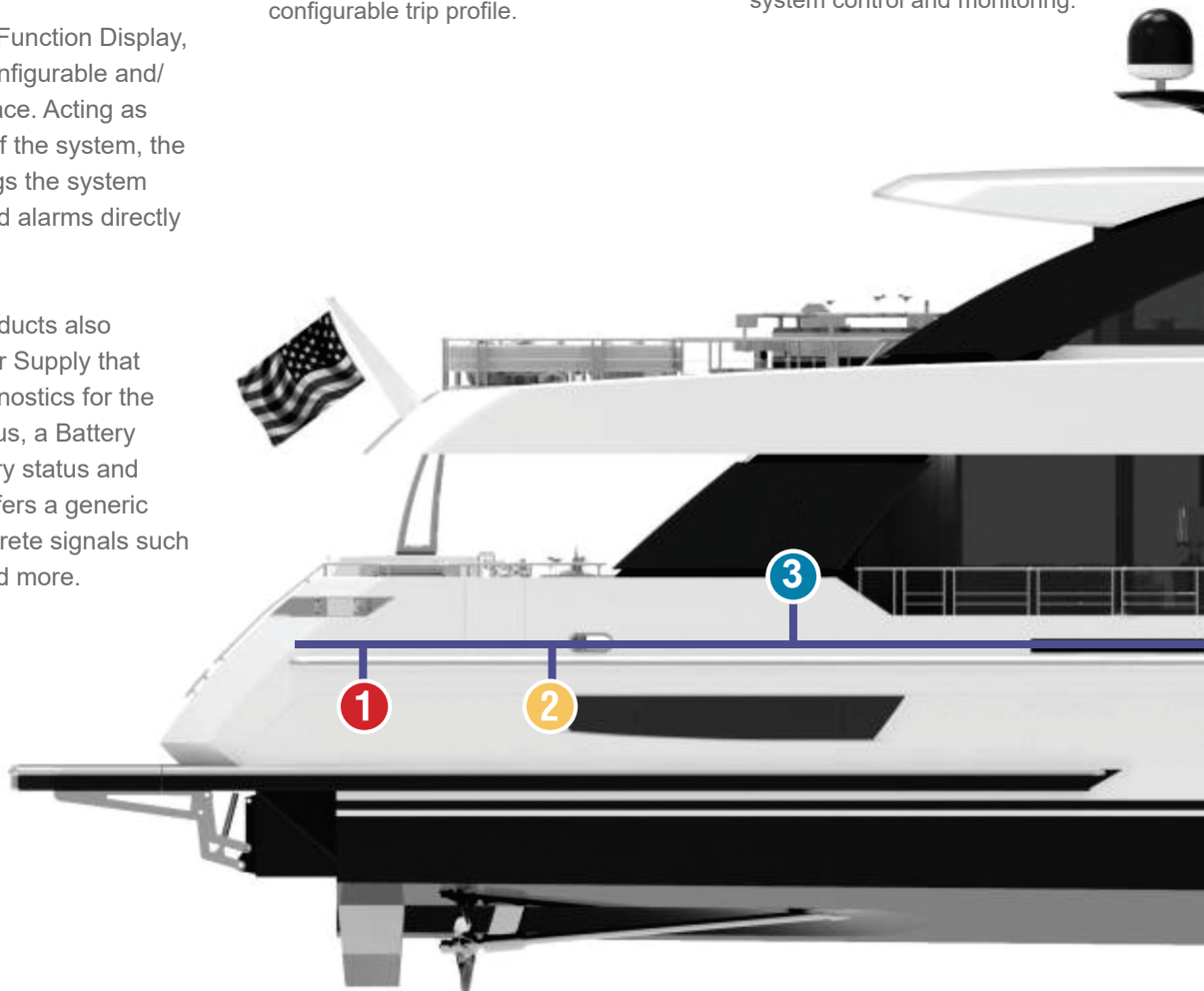
Provides DC circuit protection and remote control for up to sixteen DC circuits. Each circuit has a fully configurable trip profile.

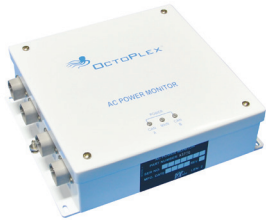
7



### Multi-Function Display

A configurable 8 or 12.1-inch dedicated Multi-Function Display (MFD) provides an extremely simple interface for system control and monitoring.





3

### AC Power Monitor

Measures and reports status of up to four AC lines including voltage, current and frequency. It can be used in 110V, 220V, three phase and 240V European applications.



4

### System Interface Unit Monitor (SIU)

Monitors and reports the status for up to 34 discrete inputs. Also suitable for reporting status of bilge float switches, hatch door open/closed, dimming, etc.



5

### Network Power Supply

Provides regulated power to the dual NMEA2000 network.



8

### DC Power Distribution Unit 8 Position

Provides DC circuit protection and remote control for up to eight DC circuits. Each circuit has a fully configurable trip profile.



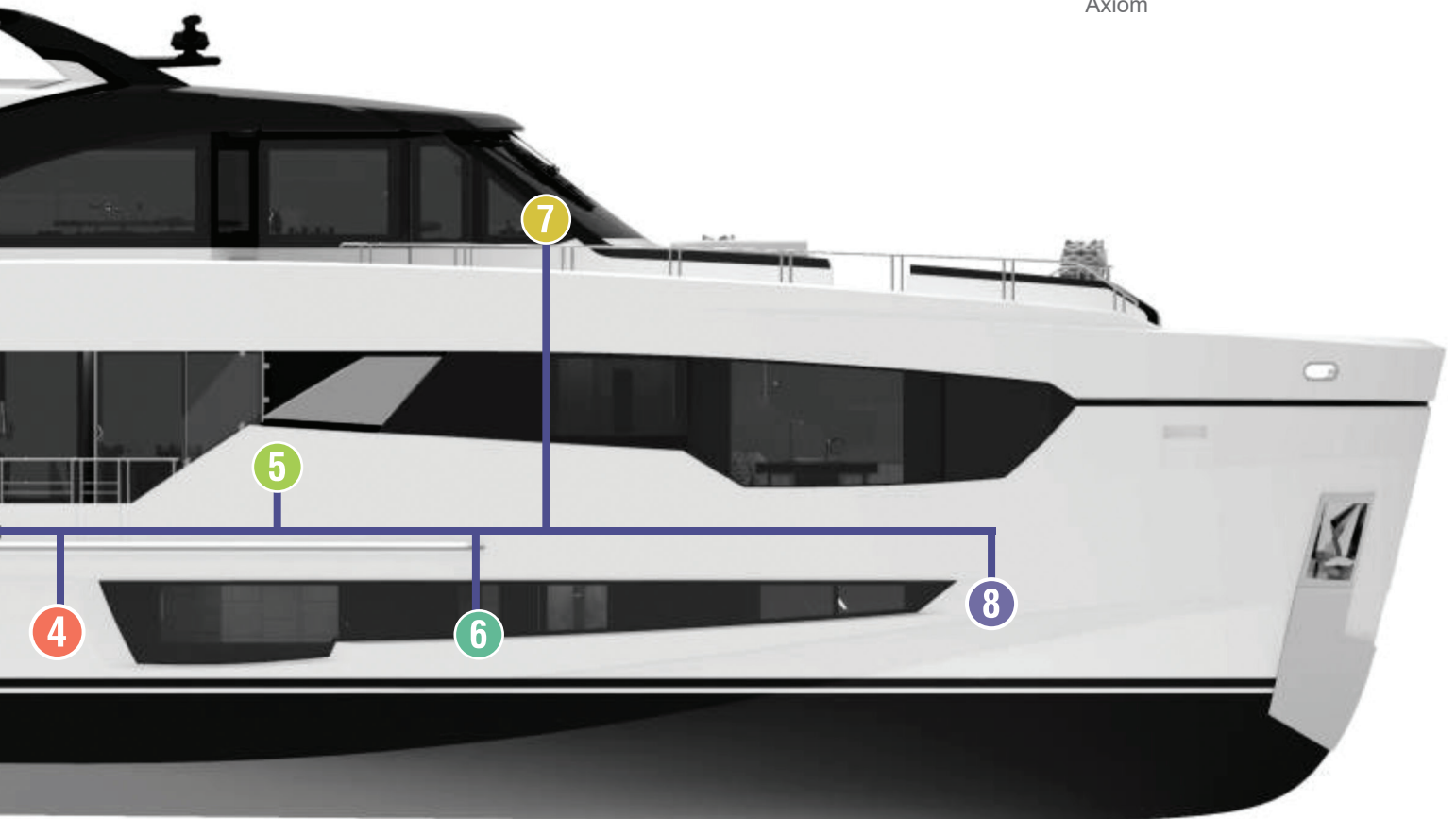
### Maretron N2KView® V3 Software

Onboard and Remote Vessel Monitoring



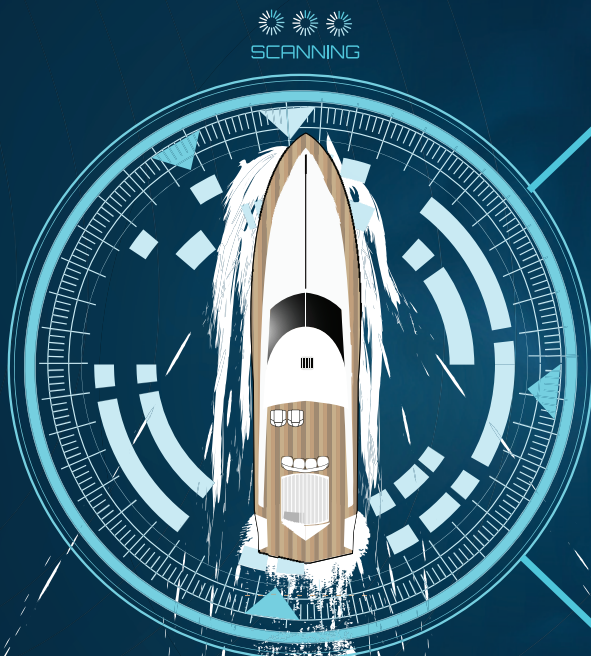
### MConnect Web Server

Provides an HTML5 gateway solution for users to interface with the NMEA2000® network on their computers, mobile devices and supports integration with MFD manufacturers, including Garmin OneHelm™ and Raymarine® Axiom



# We've got your **back[bone]**.

We are your **ONE** source for creating the intelligent boat—from cables and connectors to complete vessel monitoring and control solutions.



## **Maretron**<sup>®</sup>

VESSEL MONITORING AND CONTROL  
NMEA 2000<sup>®</sup> Hardware and Software Solutions

## **MPower**<sup>®</sup>

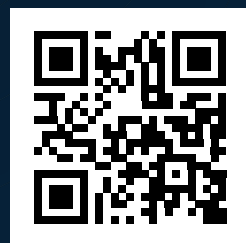
DIGITAL SWITCHING PLATFORM  
Flexible, Scalable DC Control Solutions

## **OctoPlex**<sup>®</sup>

POWER DISTRIBUTION SYSTEM  
Fully Configurable AC and DC Control Solutions

### CONNECT WITH US

Scan the QR code to connect with our expert team and learn how Maretron and OctoPlex will transform your boating experience.



[maretron.com](http://maretron.com)